

PositivePulse

ELECTRIX

SMART SYSTEMS



Smart
Lighting



Home
Security



CCTV



Intercom
Access Control



AV and Media
Control



Wireless
Control



Expandable



www.positivepulseelectrix.com.au



info@positivepulseelectrix.com.au

REC 19689

Home Automation

We at Positive Pulse Electrix have been able to develop and achieve communication and integration between several different high quality manufactures & products, which remains cost effective for the number of features offered.

Packages available in this system include:

- Lighting Control
- Alarm
- CCTV
- Intercom & access control
- Local area Network
- AV & Media

Expanded Packages:

- Multi-room audio & theatre
- AV media switching matrix
- Climate control
- Blinds, curtains & louvres
- Pools & spas
- Voice control Alexa, Google & Siri
...and more

The advantage of this system is that the house is still conventionally wired and useable. This system allows us to pre-wire for future installation or connect individual systems which can be installed, integrated or expanded at a later point, with each system maintaining independent functionality.

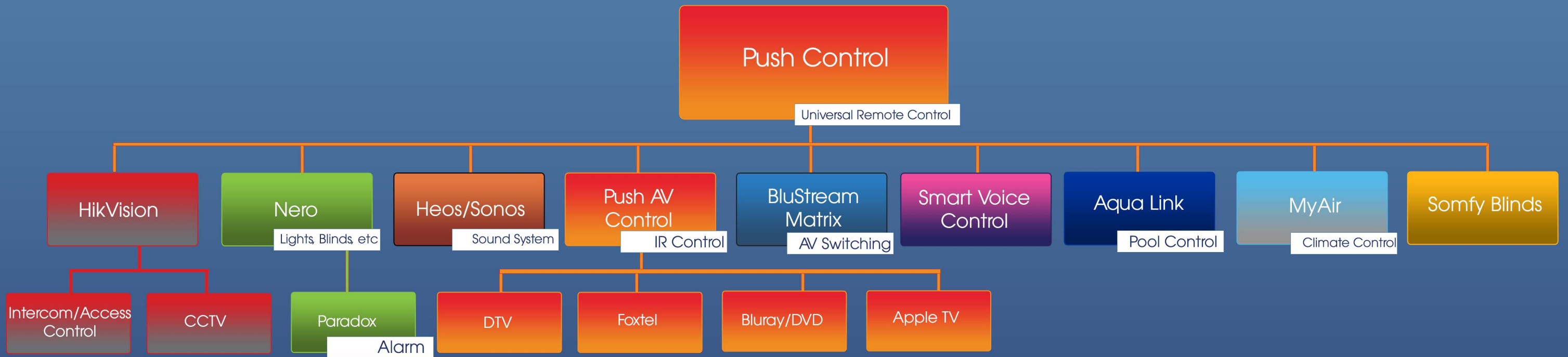
Positive Pulse has moved in this direction as we found that, within the market, there was a disconnection between client, electrician, integrator & programmer, making the whole home automation process an overwhelming experience.

By engaging in our service, we can alleviate the stress and make it an easy process with as little or as many enhancements as the clients would like; from conception to completion and maintenance, making PPE a **“one stop shop”**.

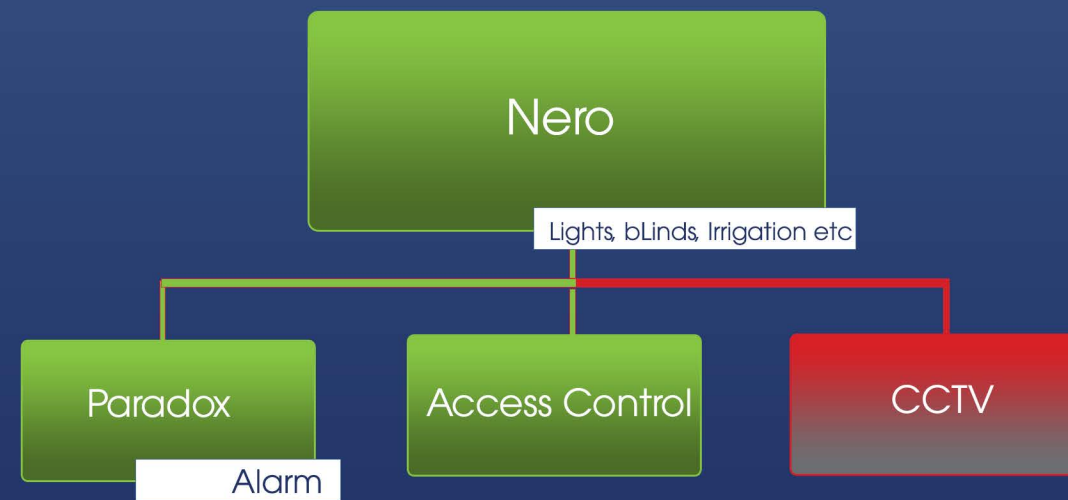
~ Home Enhancement Simplified ~



Automation Hierachy



Automation Lite



Positive Pulse ELECTRIX

RESIDENTIAL | COMMERCIAL | ARCHITECTURAL | INFRASTRUCTURE | COMMERCIAL | MAINTENANCE | SMART SYSTEM

Want to use one button to set your alarm and turn off all your lights when you leave?
Use Nero My Modes to set Home, Away, Night and Vacation routines

Don't want to get out of bed to turn off that one light downstairs?
Pop open the Nero app on your phone and turn off the light.

House getting too hot in summer?
Automate your blinds to close when the sun starts glaring through your windows.

Set the scene to automate your life: one button or scheduled
Morning Lights - turn on Hallway, kitchen & dining room lights and open blinds at 7am, turn off lights two hours later
Welcome Home Lights - turn on entry lights, garden lights and kitchen lights when you are 100m from home.

Forgot to set your alarm?
Use your phone to set it from anywhere.

Don't want to hand out codes to people?
Let cleaners & friends inside and disarm the alarm directly from your phone and arm it again when they leave.

Kids always locking themselves out?
They can use their phone to unlock the door.

Expecting a delivery?
Answer the door from your phone, talk to the delivery man and let him inside, all the while monitoring what is happening through your intercom & CCTV cameras.

Watching a movie upstairs?
See who is at the door and welcome them in from any room station located in the house or from your phone.

Away on holiday? Kids home alone? Workmen in the yard?
Check on your house from anywhere in the world using your phone. View live feeds to put your mind at ease

Dog barking at strange noises in the night?
Watch motion activated recordings with great night vision to check and see what kind of creature was annoying your dog. Save and download the recordings straight to your phone.

Worried about guests not understanding how to use your home automation?
Your house will still work the way it always should; with light switches, keypads, manual door locks and remote controls. You never have to worry about using your house without a smart phone or tablet.

Do you find that one room always ends up colder or warmer than others?
MyAir uses temperature sensors to direct airflow into each room/zone to maximise heating and cool efficiency
Want to turn the heater on before you get home?
The MyAir App gives you remote access to your climate control.

Hands full getting popcorn?
Tell Google, Siri or Alexa what you want to do. "Hey Google, Marathon Time!" - Your lights will dim, curtains close, TV turns on to Apple TV, surround sound system set to ideal volume, ready for your TV marathon.
*Popcorn not provided.

Want to have music playing all over the house?
Heos provides the ability to zone separate areas of your house to play different music or grouped together to play the same great song all over.

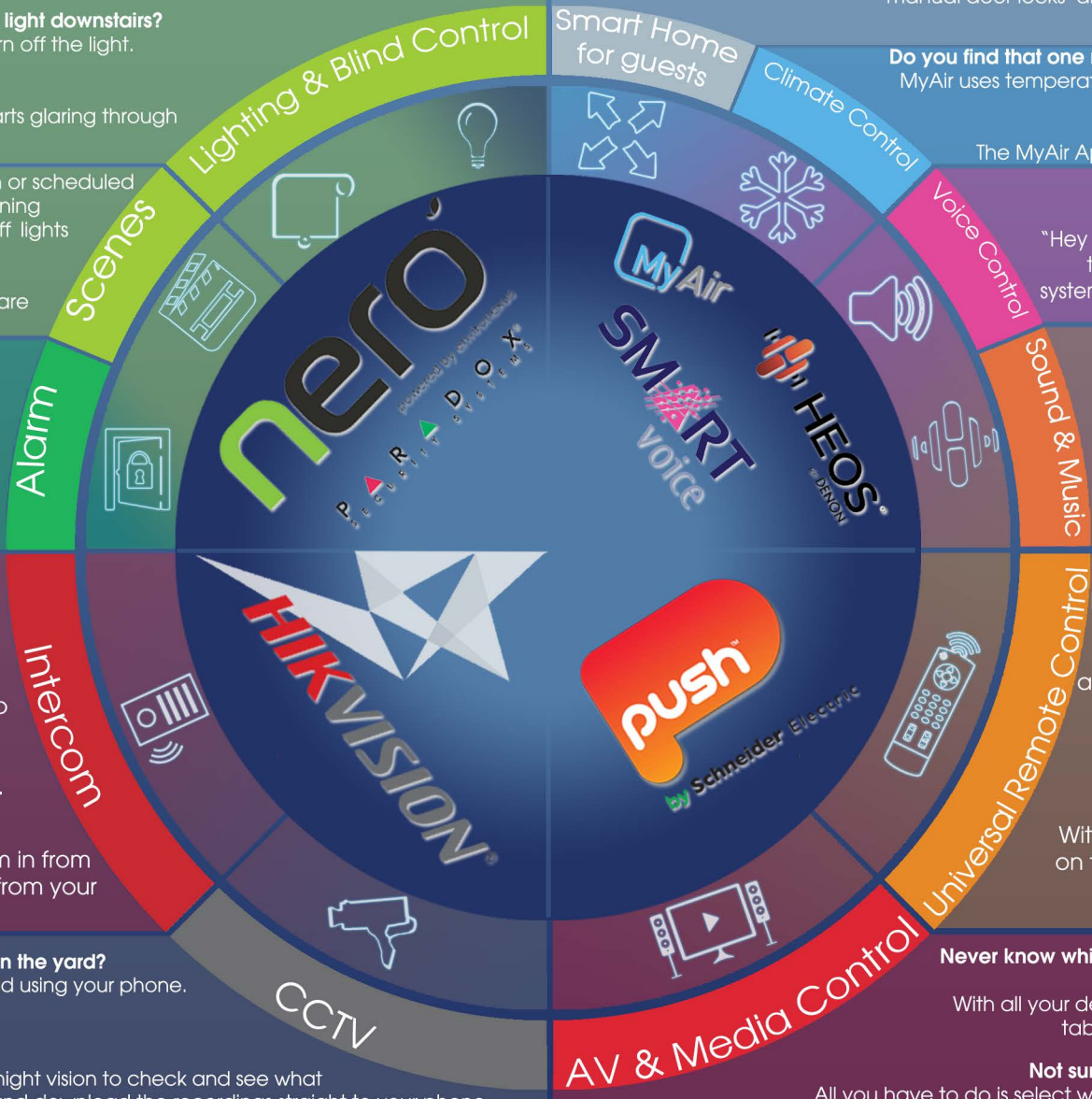
Want surround sound but not another app or remote?
Heos has sound bar, sub and surround capabilities but also utilises the Denon AVR range for a full theatre system that works with the heos app.

One App to rule them all...
Do you want one app to do all in your house?
The Push app is one app that you can use to check your CCTV, control your lights, blinds and scenes and control all your TV, media and music devices.

One button to rull them all...
Want one button to set the scene for movie watching?
With one button, Push can turn off the lights, turn on the standing lamp, close the blinds, set the TV to Bluray player and set the surround sound

Never know which remote is for the TV, Surround Sound, Foxtel and apple tv?
With all your devices connected to Push, you can simply use your tablet or phone to control any of your media devices.

Not sure which channel your Apple TV and Foxtel are on?
All you have to do is select what TV you are using, the viewing activity you want and push will turn the TV on to the right source channel and give you the right remote controls





by Schneider Electric



Environexus Nero Lighting Control


Base Package:
1 Nexus Gateway
10 Switching Groups

* Can control Blinds, Irrigation & Access



Paradox Integrated Alarm

Base Package:
1 Alarm Panel
1 Keypad
5 Detectors
Garage door remote and control
3 year remote access subscription



Local Area Network

Base Package:
1 Router
1 Wifi Access Point
1 POE Switch

* If Push is Selected, LAN is assumed as selected
* This packed is strongly recommend at all times



Hikvision CCTV

Base Package:
4 Network Cameras
1 NVR



Hikvision Intercom

Base Package:
1 Villa Door Camera Station
1 Master Monitor Station
1 Extension Monitor Station



PUSH Control

PC4 PC2 PC1

* Prices Include Device Set up & Programming

Additional Services for PUSH Control



HEOS: Room controlled Speakers
Denon/HEOS: AVR - Theatre and Surround Sound



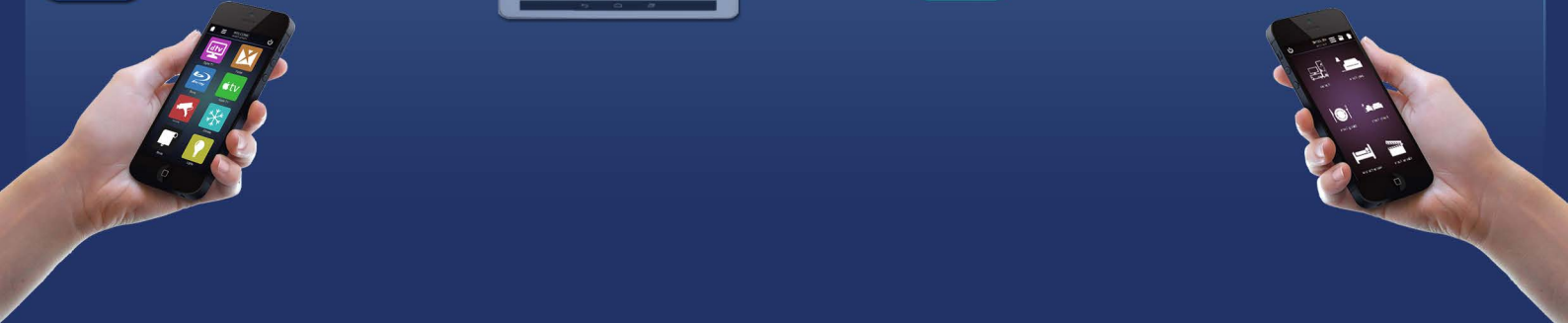
Jandy AquaLink: Pool Control



MyAir: Climate Control



Somfy: Blind Control
BluStream: AV Switching
Amazon Echo: Alexa Voice Control





by Schneider Electric

Environexus Nero



Control: Lights, Blinds, Security, Irrigation, Access control
 Expandable
 Remote Access
 User Orientated Experience



Paradox Integrated Alarm

Nero Integration
 Remote Access
 Access Control
 1 stop keyfob for access and control



Local Area Network

Robust
 Expandable
 Well Priced
 Dependable



Hikvision CCTV



Remote Access: Live feeds, Recorded Data
 Download recorded videos
 Records movement
 Overwrites oldest files

*Dependent on upload speeds of 4MB of higher

Hikvision Intercom



Remote Access: Viewing, Talking, Access control
 Keyless entry: Fob, Cards phone etc

*Dependent on upload speeds of 4MB of higher



PUSH Control

Customisable Universal remote
 One stop for AV Control; Foxtel, Digital TV, Bluray and Apple TV
 Works with other Third Party Products
 User orientated interfaces

Additional Services for PUSH Control



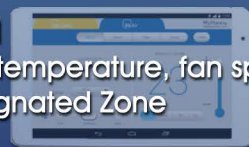
HEOS: Room controlled Speakers
 Expandable, Excellent sound quality,
 Multi-Zone enabled and app controlled
 Denon/HEOS: AVR
 Heos App integrated Theatre System



Jandy AquaLink: Pool Control
 Automate, monitor and control your pool and spa



MyAir: Climate Control
 Independent control of temperature, fan speed, modes etc in each designated Zone



Somfy: Blind Control
 BluStream: AV Switching
 Amazon Echo: Alexa Voice Control





Nero-Nexus

Base Package: Including Programming
1 Nexzus Gateway
10 Switching Groups (blinds, lights, irrigation etc)



A truly intelligent home is one that can be programmed to suit your lifestyle.

Nero is an affordable, scalable, and retrofit solution that allows you to build your dream smart home, one switch at a time. Your smart phone or tablet becomes the control interface for all of your connected devices, seamlessly merging lifestyle and technology into one.

Geofencing is also a handy feature allowing users to set up a zone around their home to trigger lights, blinds, security system etc, all based on the device's proximity to the home.



Smart Lighting



Home Security



Wireless Control



Retrofit Install



Simple Setup



Easily Expandable

Products

Nero-Plug

The NERO-PLUG is an easy to install smart plug, that lets you wirelessly control whatever is plugged into it. Perfect for quick installations that require basic on/off control such as outdoor lighting or lamps. It offers energy monitoring and side mount USB charging.



Nero-Relay and Nero-2Relay

The NERO-RELAY is a small retro-fit 240v module that can be used to enable switching of an electrical device, such as lights, fans and appliances. It offers energy monitoring, and variable configuration settings. The NERO-2RELAY is a small retro-fit module that can be used to enable on/off control capability of two connected circuits.



Nero-Dim

The NERO-DIM is a small retrofit 240v module that can be installed behind your existing light switch to provide smart control of your LED Downlights. It offers energy monitoring, and variable configuration settings.



Nero-Blind

The NERO-BLIND is a small retro-fit module used to enable 240v switched motor control of blinds, roller shades and venetian slats. It offers energy monitoring, auto calibration and custom blind positioning.



Nero-Dry

The NERO-DRY is a small retro-fit module that provides voltage-free switching of a connected device. It is perfect for applications such as garage doors and door strikes.

Nero-Multi

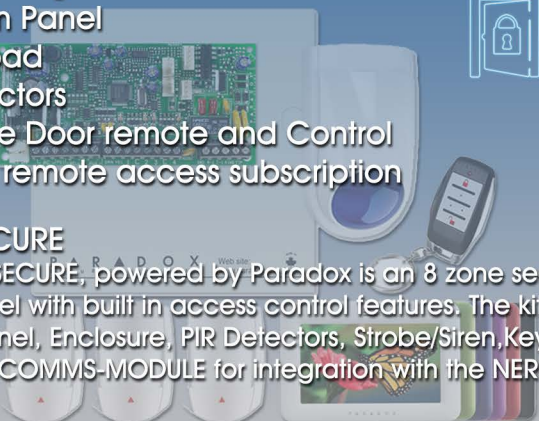
The NERO-MULTI is a multi-purpose battery or USB powered sensor that can monitor temperature, lighting, motion, humidity, UV and vibration. With a 5 meter range and a 120-degree field of view, the NERO-MULTI is a versatile device that can be wall mounted or discretely recessed (optional recessor available).



Security System

Base Package:

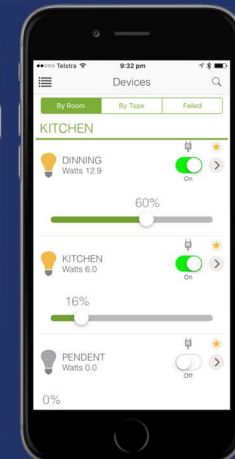
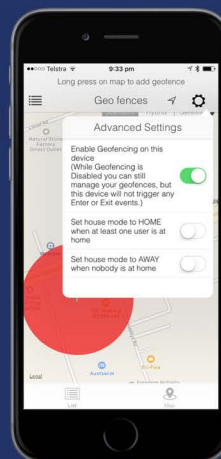
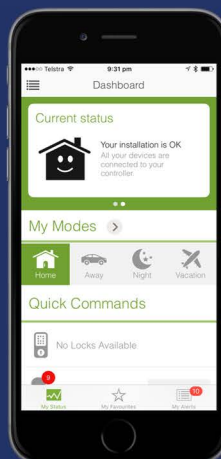
1 Alarm Panel
1 Keypad
5 Detectors
Garage Door remote and Control
3 year remote access subscription



NEXUS-SECURE

The NEXUS-SECURE, powered by Paradox is an 8 zone security control panel with built in access control features. The kit includes Panel, Enclosure, PIR Detectors, Sirobe/Siren, Keypad, and NEXUS-COMMS-MODULE for integration with the NERO gateway.

*Can also be installed as a standalone alarm and security system



PositivePulse

ELECTRIX

SMART SYSTEMS

HIKVISION

IP CCTV and Intercom



CCTV

Base Package:
4 Network Cameras
1 NVR

The IP cameras and Network recording device in this package work to record movement around your home. The package can be expanded to the layout and size of your property and security needs.

Access:
The Hik-Connect app allows you to log in and view live streams of any of your cameras remotely and locally. The playback feature also allows you to view all available recordings for any camera stream, remotely or locally. These recordings are also able to be downloaded. Access is available through a web interface also.

Alerts:
Set up Notifications on your phone to alert you to motion detected by your CCTV



*Dependent on upload speeds of 4MB or higher



Intercom

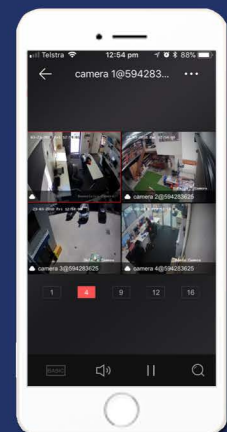
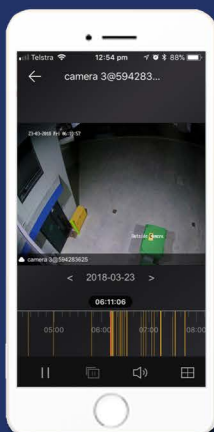
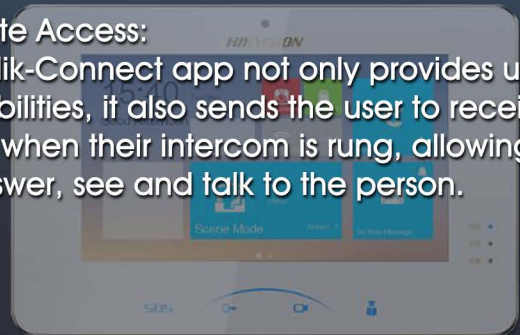


Base Package:
1 Villa Door Camera Station
1 Master Monitor Station
1 Extension Monitor Station

The Hikvision intercom is an IP based system that allows the user to see and speak to visitors at their gate or door from Monitor stations inside.

Keyless Entry:
Users can unlock the door through the monitor stations, using swipe card or keyfobs or through the Hik-Connect app on their phone.

Remote Access:
The Hik-Connect app not only provides unlock capabilities, it also sends the user to receive alerts when their intercom is rung, allowing them to answer, see and talk to the person.



PositivePulse ELECTRIX

SMART SYSTEMS

Universal Remote Control



Push Control



PC4 Package:
1x PC4 Control Device
4x IR Control Ports
2x Relays
1x RS232 Connection

PC2 Package:
1x PC2 Control Device
4x IR Control Ports
2x Relays
2x RS232 Connections

PC1 Package:
1x PC1 Control Device
8x IR Control Ports
4x Relays
4x RS232 Connections

TVs and Source Devices (Foxtel, Bluray, Apple TV etc) each require 1 IR Port.



Available Integration Products



HikVision CCTV Streams

IP



Nero Automation products
Including Nexus-Secure

IP



Heos Music System
Denon Heos AVR

IP

RS232



Blustream Distribution

IP



Jandy Aqualink
Pool and Spa Control

RS232

*Specialised Installers Required



MyAir Climate Control

IP

*Specialised Installers Required

*This list is not exhaustive and only provides some of the key services available

At the push of a button curtains open, lights turn on, your music starts playing, the TV switches to your favourite channel, air conditioning turns on...and these are just a few things Push is capable of controlling.

Push gives you the simplicity you've been waiting for, empowering you to take control of your home's technology. Push creates a "smart home", allowing you to operate all electronic devices from one device, such as a tablet or smartphone.

The result is greater connectivity, simplicity, comfort and control.





Room Zones Music

Standard Package:
 2- 7inch In Ceiling Speakers
 1- HEOS AMP



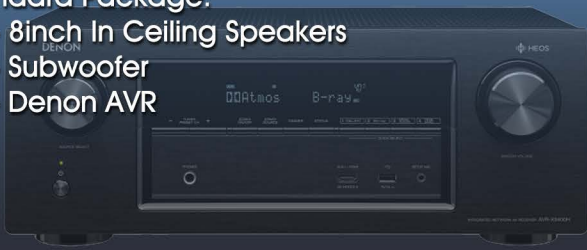
Theatre Life

Standard Package:
 1- HEOS BAR
 2- 7inch In Ceiling Speakers
 1- HEOS AMP
 *Optional HEOS SUB



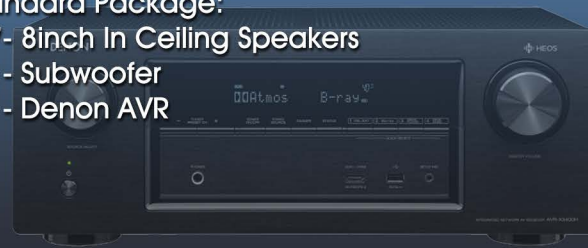
NILES Theatre 5.1 Surround Sound

Standard Package:
 5- 8inch In Ceiling Speakers
 1- Subwoofer
 1- Denon AVR



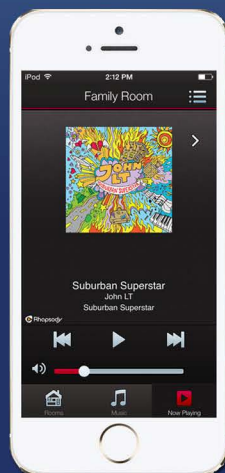
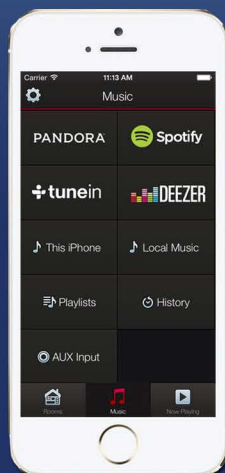
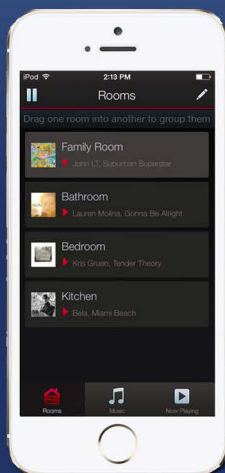
NILES Theatre 7.1 Surround Sound

Standard Package:
 7- 8inch In Ceiling Speakers
 1- Subwoofer
 1- Denon AVR



HEOS: Zone/Room controlled Speakers
 An expandable system with excellent sound quality,
 Multi-Zone enabled and app controlled

Denon/HEOS: AVR
 Heos App integrated Theatre System



BLUSTREAM
MATRIX

HDMI Distribution

Base Package: 8 Sources + 8 Screens
1 HMXL88 V2 Matrix
6 Display Connections

The blustream HDbaseT matrix allows users to store all media sources (Apple TV, Foxtel, Bluray etc) out of the way but have access to each device on any TV connected to the matrix.

The built in IR control gives the ability to use remote controls at any TV in the house to control media sources.

With the ability to integrate with control systems, such as Push, control can be no further away than your phone or tablet.



BLUSTREAM
MATRIX

Multicast System?

BLUSTREAM
MULTICAST

Package determined based on project scope

The multicast system provides the ability to distribute 4K media sources (Apple TV, Bluray, Foxtel etc) to connect TVs through a dedicated media network, separated from the users Home Data network.

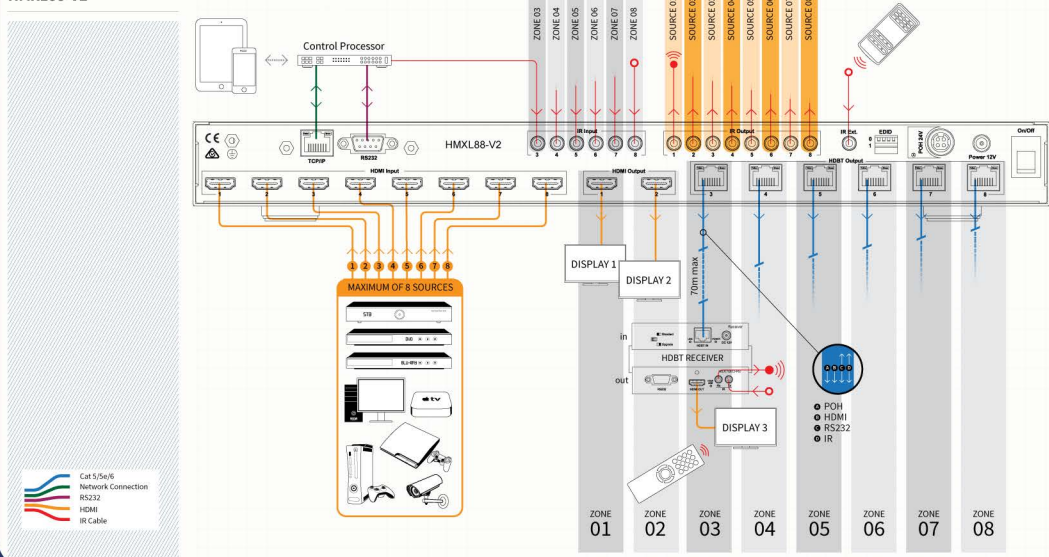
Multicast UHD from Blustream delivers virtually latency free distribution of HDMI video over a 1GB Network switch. Using lossless compression technology. The beauty of Multicast is its flexibility and ease of installation.

The Multicast System also has easy integration with third party control systems, such as Push



BLUSTREAM

Example Schematic
HMXL88-V2





Packages:

Life Install (nero only)
inc 15x Commands

Standard Install (push only)
inc 20x Commands

Premium Install (push & Nero)
inc 25x Commands

SmartVoice

VOICE THE NEXT GENERATION OF CONTROL
Your Home & Electronics, under your Command

Providing voice control for a range of home automation systems, Smart Voice changes any smart home into a fully voice controlled home, using an always listening smart speaker. With simple and adaptable commands, Smart Voice can operate virtually any device, system or appliance.

Smart Voice connects with a range of automation systems, providing voice control of almost any device within your smart home

Integrates With...

Automation Systems

Nero
Push



Voice Controllers

Google
Apple
Amazon

Smart Voice listens to the customer commands from a voice receiver, determines their purpose and then examines them against a database specific to that customer. Smart Voice sends messages to all of the required automation systems and produces a verbal reply for the user.

The Smart Voice web portal supports the easy configuration process for both the installer and customer. Via the portal, customer inputs are captured on their desired voice control items. Following this, the Smart Voice solution automatically produces the re-quired programming & code for the selected voice receiver. The process is simple, efficient and allows for ongoing updates as the customer use expands, or as additional Voice Receivers come into the market.





Choosing a Voice Control System



While Smart Voice talks to each of the main Voice Control Systems - allowing you to activate automation sequences from Push and Nero, it is important to know what else these controllers allow you to do and what other devices are required to use them.

	Google	Amazon Alexa	Siri
Required Device for Use	• Google Home	• Echo • Sonos One	• iOS Device • Home Pod
Sound System Control	• Heos	• Heos – Alexa Skill • Sonos – natively through Sonos One	• Sonos • Heos - Limited
Spotify on Sound System	• Heos - Yes	• Heos – TBC • Sonos – Yes	• Sonos – Yes

Sound System

Sound Systems

- Heos
- Sonos
- Others

There are several things to consider when selecting the sound system that suits your needs:

	HEOS	SONOS
Apple Music	• Airplay to Theatre Amp (then can be grouped with other speakers)	• Natively
Spotify	• Natively	• Natively
Individual Zones/Rooms	• Yes – can be played as a group or used individually simultaneously	• Yes – can be played as a group or used individually simultaneously
Lite Theatre (i.e. Bar and Rear Surrounds)	• Yes	• Yes
Theatre System (5.1 or 7.1)	• Yes – Can be used as part of music/room groupings also	• No – can be achieved with wireless Subwoofer, speakers and sound bar

Selecting the right Push and/or Matrix Configuration

If you decide to implement the Push and/or HDMI Distribution Matrix packages it is helpful for us to know what your TV and Source Device needs are.

- Are you implementing both Push and the Matrix?
- How many TVs are going to be connected to the system?
- How many source devices are to be connected and controlled?* i.e. 2x foxtel & 1x Apple TV.
- Do you want to be able to expand in the future?

The answers to these questions help us select and tailor the right package for your needs. Any information you can provide will be useful.

*Number of devices depends on how many shows you want to watch at the same time from that source type.

i.e. Foxtel: watch a movie in the living room and a cooking show in the kitchen - you will need two foxtel boxes for simultaneous viewing.

Other Systems to Consider

Pool Automation - Jandy Aqualink

Press one button in Push to start your Spa jets, turn on the pool & Spa lights and start playing music.

Climate Control - Nest Thermostats or My Air

Integrate the control of your Heating and Cooling with the other functions of your house. Control your house's climate remotely and give individual control to each zone.

Central Controller - iPort

Never know where your Phone or iPad is? The iPort wall mount system means you have an iPad dedicated to the control of your home and it's always there, never lost to the abyss of the couch cushions.

the 1990s, the number of people who have been employed in the service sector has increased in all countries.

There are several reasons for the increase in the service sector. First, the service sector has become more important in the economy. Second, the service sector has become more important in the labour market. Third, the service sector has become more important in the social structure.

The service sector has become more important in the economy because of the increasing demand for services.

The service sector has become more important in the labour market because of the increasing demand for service workers.

The service sector has become more important in the social structure because of the increasing demand for service workers.

The service sector has become more important in the social structure because of the increasing demand for service workers.

The service sector has become more important in the social structure because of the increasing demand for service workers.

The service sector has become more important in the social structure because of the increasing demand for service workers.

The service sector has become more important in the social structure because of the increasing demand for service workers.

The service sector has become more important in the social structure because of the increasing demand for service workers.

The service sector has become more important in the social structure because of the increasing demand for service workers.

The service sector has become more important in the social structure because of the increasing demand for service workers.

The service sector has become more important in the social structure because of the increasing demand for service workers.

The service sector has become more important in the social structure because of the increasing demand for service workers.

The service sector has become more important in the social structure because of the increasing demand for service workers.

The service sector has become more important in the social structure because of the increasing demand for service workers.

The service sector has become more important in the social structure because of the increasing demand for service workers.

The service sector has become more important in the social structure because of the increasing demand for service workers.

The service sector has become more important in the social structure because of the increasing demand for service workers.

The service sector has become more important in the social structure because of the increasing demand for service workers.

The service sector has become more important in the social structure because of the increasing demand for service workers.

The service sector has become more important in the social structure because of the increasing demand for service workers.

The service sector has become more important in the social structure because of the increasing demand for service workers.

The service sector has become more important in the social structure because of the increasing demand for service workers.

The service sector has become more important in the social structure because of the increasing demand for service workers.